



Cameras and Domes

Honeywell's camera and dome product line is one of the broadest and most complete in the industry. We have camera solutions to solve virtually every video surveillance requirement – from indoor and outdoor to fixed-mount box cameras and fully-featured PTZ domes.

THIS SECTION INCLUDES:

- Cameras
- Bullet Cameras
- Specialty Cameras
- Lenses
- Housings and Mounts
- Infrared Illuminators
- Indoor Mini-Domes
- Indoor/Outdoor Mini-Domes
- PTZ Domes

Cameras and Domes



Whether you're installing video surveillance in a bank lobby, parking lot, grocery store or federal prison, Honeywell has the right camera or dome solution for you. Our cameras are easy-to-install, easy-to-use and are designed to provide customized, world-class protection for any business.

Benefits:

- Wide range of high performing cameras suitable for any application
- Saves time and money through ease of installation
- Designed for high performance in all light conditions
- Features high and standard resolution, sturdy housing, and clear imaging
- Rigorous testing ensures the highest level of reliability



CAMERAS

Honeywell provides a comprehensive line of cameras that offers the flexibility and versatility required by the most demanding customer. Our box cameras come in a variety of configurations and with a multitude of options, including Ultra Wide Dynamic, True Day/Night, high resolution color, miniature form factor, and black and white. Incredibly versatile, each can be mounted in various ways with one of several lens options.

HCCWD484

Ultra Wide Dynamic Color Camera

The HCCWD484 is an ideal camera for environments with high contrast and changing light conditions. With next generation image capture technology, each pixel optimizes its digital image to suit the available lighting conditions.

- 1/3" image sensor
- 480 TVL
- Sensitivity: 0.4 lux
- 95-120 dB of Ultra Wide dynamic range
- 5 wide dynamic presets
- Input power: 12 VDC/24 VAC

Suggested Lenses: System Series (page 21)

Suggested Housings and Mounts: (pages 22-23)

Suggested Power Supplies: (page 66)



ADI Ordering Information



HCCWD484

HCD484E

True Day/Night High Resolution Color Camera

If your application requires 24/7 surveillance with accurate color in the day and low light night performance in black and white, the HCD484E True Day/Night Color Camera offers outstanding image quality.

- 1/3" CCD
- 480 TVL
- Sensitivity: 0.06 lux
- 6 zones of backlight compensation
- RS485 remote control
- Input power: 12 VDC/24 VAC

Suggested Lenses: Day/Night Series (page 21)

Suggested Housings and Mounts: (pages 22-23)

Suggested Power Supplies: (page 66)



HCD484E

ADI Ordering Information



HCCM474M

Day/Night, Miniature, High Resolution Color Camera

The HCCM474M is perfect for use in limited space and/or day/night applications.

- 1/3" CCD
- 470 TVL
- Sensitivity: 0.4 lux (color), 0.1 lux (B/W) @ F1.2
- On-screen display for set up and adjustment
- 6 zones of automatic backlight compensation
- Extremely small footprint: (1.6"W x 1.6"H x 2.8"D)
- Input power: 12 VDC/24 VAC

Suggested Lenses: System Series (page 21)

Suggested Housings and Mounts: (pages 22-23)

Suggested Power Supplies: (page 66)



HCC474M

Miniature, High Resolution Color Camera

The HCC474M is perfect for normal lighting conditions with limited space. This camera fits easily into many of the industry's fixed dome housings, including the Honeywell AD10 and AD12 Series—even with a 5-50 mm lens.

- 1/3" CCD
- 470 TVL
- Sensitivity: 0.4 lux @ F1.2
- On-screen display for set up and adjustment
- 6 zones of automatic backlight compensation
- Extremely small footprint: (1.6"W x 1.6"H x 2.8"D)
- Input power: 12 VDC/24 VAC

Suggested Lenses: System Series (page 21)

Suggested Housings and Mounts: (pages 22-23)

Suggested Power Supplies: (page 66)



HCC484TP

High Resolution, Fully-Featured Color Camera with Twisted-Pair Output

If your application requires higher density cabling or long transmission distances, the HCC484TP Unshielded Twisted Pair (UTP) Camera can help reduce the cost and time of installation without sacrificing image quality. It also features exceptional low light performance.

- 1/3" CCD
- 480 TVL
- UTP or Coax video output
- Sensitivity: 0.1/0.001 lux (with digital slow shutter) @ F1.2
- 3 Level backlight compensation operation
- RS485 remote control
- Input power: 12 VDC/24 VAC

Suggested Lenses: System Series (page 21)

Suggested Housings and Mounts: (pages 22-23)

Suggested Power Supplies: (page 66)

HCC484E

High Resolution Color Camera

One of the most popular and widely used cameras today, the HCC484E is flexible enough for broad use yet powerful enough to handle nearly any surveillance project.

- 1/3" CCD
- 480 TVL
- Sensitivity: 0.70 lux @ F1.2
- High and low automatic gain control modes
- Automatic backlight compensation
- Input power: 12 VDC/24 VAC

Suggested Lenses: System Series (page 21)

Suggested Housings and Mounts: (pages 22-23)

Suggested Power Supplies: (page 66)



ADI Ordering Information



HCC484E

ALSO AVAILABLE:

HCC334E

Standard Resolution Color Camera

- 330 TVL
- Sensitivity: 0.75 lux @ F1.2



HCC334E

HCM574E

High Resolution Black and White Camera

The HCM574E is ideal for extreme low-light conditions delivering high-resolution images, in applications where color is not required.

- 1/3" CCD
- 580 TVL
- Sensitivity: 0.15 lux @ F1.2
- High and low automatic gain control modes
- Automatic backlight compensation
- Input power: 12 VDC/24 VAC

Suggested Lenses: System Series (page 21)

Suggested Housings and Mounts: (pages 22-23)

Suggested Power Supplies: (page 66)



HCM574E

ALSO AVAILABLE:

HCM384E

Standard Resolution Black and White Camera

- 380 TVL
- Sensitivity: 0.20 lux @ F1.2



HCM384E

BULLET CAMERAS

Honeywell's discreet and stylish high-quality bullet-style cameras are designed with aesthetics, flexibility and ease-of-installation in mind. When ambient light drops below a certain point, a mechanical IR cut filter within the camera switches and the camera changes from color to black and white enabling color pictures to be captured by day, and clear black and white images at night. Our industry leading product offering includes models with polished aluminum enclosures, sunhoods and enclosed infrared illuminators.

HCD82, HCD81 Series

Discreet, bullet-style color camera that is impact and tamper resistant.

- 1/3" CCD
- Built-in 4-9 mm VFAI Lens (Horizontal FOV, 71° – 31.6°)
- Built-in IR Illuminators: 18 or 48 LEDs for covert illumination
- Polished aluminum enclosure with protective sunhood
- Self-configuring power connection to 12 VDC or 24 VAC with transient surge protection
- 350 or 480 TVL
- Concealed wiring
- IP66 rated



ADI Ordering Information



HCD82484

High Resolution, True Day/Night Color Bullet Camera with 48 IR LEDs

- 480 TVL
- Ability to view images up to 70' (23 m) dependent on scene reflectance

ALSO AVAILABLE:

HCD82354

Standard Resolution, True Day/Night Color Bullet Camera with 48 IR LEDs

- 350 TVL
- Ability to view images up to 70' (23 m) dependent on scene reflectance



HCD81484

High Resolution, True Day/Night Color Bullet Camera with 18 IR LEDs

- 480 TVL
- Ability to view images up to 40' (13 m) dependent on scene reflectance

ALSO AVAILABLE:

HCD81354

Standard Resolution, True Day/Night Color Bullet Camera with 18 IR LEDs

- 350 TVL
- Ability to view images up to 40' (13 m) dependent on scene reflectance





HCD80, HCC80 Series

Discreet, bullet-style color camera that is impact and tamper resistant.

- 1/3" CCD
- Built-in 4-9 mm VFAI Lens (Horizontal FOV, 71° – 31.6 °)
- Color or True Day/Night camera with IR-cut filter removal mechanism
- Polished aluminum enclosure with protective sunhood
- Easy installation
- Flexible mounting options
- 350 or 480 TVL
- Self-configuring power connection to 12 VDC or 24 VAC with transient protection
- Concealed wiring
- IP66 rating

HCD80484

High Resolution, True Day/Night Color Bullet Camera with 0.2 lux @ F1.5

- 480 TVL

ALSO AVAILABLE:

HCD80354

Standard Resolution, True Day/Night Color Bullet Camera with 0.15 lux @ F1.5

- 350 TVL

HCC80484

High Resolution, Color Bullet Camera with 0.75 lux @ F1.5

- 480 TVL

ALSO AVAILABLE:

HCC80354

Standard Resolution, Color Bullet Camera with 0.6 lux @ F1.5

- 350 TVL

ADI Ordering Information





CA Series

The CA Series provides a stylish solution for discreet indoor surveillance applications in a cost-effective package. The small size, (Horizontal FOV, 70°) and low light sensitivity provides an ideal solution for covert surveillance applications in a protected environment. Each unit is packaged with the mounting hardware, lens, and 12 VDC power supply for quick installation of the camera.

ADI Ordering Information



CA50BCN

CA50BCN

Standard Resolution, Color, Bullet Camera

- 1/4" Image Sensor
- 350 TVL
- 3.6 mm lens
- Sensitivity: 2 lux @ F2.0
- Power: 12 VDC
- Small size: 3.43" x 1.02"



CA40BMN

CA40BMN

Standard Resolution, Black and White, Bullet Camera

- 1/4" Image Sensor
- 380 TVL
- 3.6 mm lens
- Sensitivity: 0.5 lux @ F2.0
- Power: 12 VDC
- Small size: 3.43" x 1.02"

SPECIALTY CAMERAS

Honeywell has created several specialty camera lines for extreme applications demanding specific features not offered by standard products. Features such as extreme temperature, low light performance, vandal resistant and bullet resistant are included in this line of cameras.



V100 Series

V100 bullet resistant cameras are available in many versions to match depth of focus for width of field.

- Machined marine-grade aluminum enclosure
- 1/2" Lexan® window (withstands assault from a 9 mm handgun)
- Adjustable stainless steel U-bracket
- Compatible with quick change lenses for flexibility during and after installation
- Weather proof design

V130-03

Weather and Bullet Proof Camera, High Resolution, Color Bullet Style Camera, 2.9 mm lens

- 480 TVL
- Sensitivity: 0.6 lux @ F1.5
- Power: 10-15 VDC

ALSO AVAILABLE:

V101-03

Weather and Bullet Proof Camera, Standard Resolution, Black and White Bullet Style Camera with 0.06 lux @ F1.5, 2.9 mm lens

- 410 TVL

V130-06

Weather and Bullet Proof Camera, High Resolution, Color Bullet Style Camera with 0.6 lux @ F1.5, 6 mm lens

- 480 TVL

V130-08

Weather and Bullet Proof Camera, High Resolution, Color Bullet Style Camera with 0.6 lux @ F1.5, 8 mm lens

- 480 TVL

V120-03

Weather and Bullet Proof Camera, Standard Resolution, Color Bullet Style Camera with 0.5 lux @ F1.5, 2.9 mm lens

- 350 TVL

ADI Ordering Information



ADI Ordering Information



V120-04

Weather and Bullet Proof Camera, Standard Resolution, Color Bullet Style Camera with 0.5 lux @ F1.5, 3.6 mm lens

- 350 TVL



V120-06

Weather and Bullet Proof Camera, Standard Resolution, Color Bullet Style Camera with 0.5 lux @ F1.5, 6 mm lens

- 350 TVL



V120-08

Weather and Bullet Proof Camera, Standard Resolution, Color Bullet Style Camera with 0.5 lux @ F1.5, 8 mm lens

- 350 TVL



V110-04

Weather and Bullet Proof Camera, High Resolution, Black and White Bullet Style Camera with 0.08 lux @ F1.5, 3.6 mm lens

- 570 TVL



V110-06

Weather and Bullet Proof Camera, High Resolution, Black and White Bullet Style Camera with 0.08 lux @ F1.5, 6 mm lens

- 570 TVL



V101-04

Weather and Bullet Proof Camera, Standard Resolution, Black and White Bullet Style Camera with 0.06 lux @ F1.5, 3.6 mm lens

- 410 TVL



V101-12

Weather and Bullet Proof Camera, Standard Resolution, Black and White Bullet Style Camera with 0.06 lux @ F1.5, 12 mm lens

- 410 TVL



V101-16

Weather and Bullet Proof Camera, Standard Resolution, Black and White Bullet Style Camera with 0.06 lux @ F1.5, 16 mm lens

- 410 TVL

Additional models are available depending on your exact requirements. For ordering information, visit www.honeywellvideo.com or contact Inside Sales at 1-800-796-2288.

V60 Series

Night Hawk® and Arctic Night

For an uncompromised image in the darkest and coldest environments, the V60 Series offers the following features:

- V60N has built-in IR Illuminators for visibility up to 40' in total darkness (visibility dependent on scene reflectance)
- Rugged die-cast, weather-proof enclosure
- V60A operates down to -50°F (-46°C)
- Quick and easy installation
- Power: 12 VDC (±10%)



ALSO AVAILABLE:

V60NB6029

Night Hawk, Black and White Camera,
High Resolution, 2.9 mm lens

- 570 TVL

V60NB6036

Night Hawk, Black and White Camera,
High Resolution, 3.6 mm lens

- 570 TVL

V60NB6060

Night Hawk, Black and White Camera,
High Resolution, 6 mm lens

- 570 TVL

V60NB1029

Night Hawk, Black and White Camera,
Standard Resolution, 2.9 mm lens

- 410 TVL

V60NB1060

Night Hawk, Black and White Camera,
Standard Resolution, 6 mm lens

- 410 TVL

ADI Ordering Information



Cameras and Domes | SPECIALTY CAMERAS

ADI Ordering Information



V60NB1080

Night Hawk, Black and White Camera,
Standard Resolution, 8 mm lens

- 410 TVL



V60NB1120

Night Hawk, Black and White Camera,
Standard Resolution, 12 mm lens

- 410 TVL



V60AB6029

Arctic Night, Black and White Camera,
High Resolution, 2.9 mm lens

- 570 TVL



V60AB6036

Arctic Night, Black and White Camera,
High Resolution, 3.6 mm lens

- 570 TVL



V60AB1029

Arctic Night, Black and White Camera,
Standard Resolution, 2.9 mm lens

- 410 TVL



V60AB1036

Arctic Night, Black and White Camera,
Standard Resolution, 3.6 mm lens

- 410 TVL



V60AB1080

Arctic Night, Black and White Camera,
Standard Resolution, 8 mm lens

- 410 TVL

Additional models are available depending on your exact requirements. For ordering information, visit www.honeywellvideo.com or contact Inside Sales at 1-800-796-2288.



V50 WedgeView Series

Ideal for low-profile ceiling and wall-mount applications, the V50 WedgeView Series offers the following features:

- Polycarbonate enclosure – can be painted to match décor
- Low-profile (2.6" H) easily blends into surroundings
- Completely concealed wiring
- Adjustable (pan and tilt) camera position
- Weather-sealed for outdoor installations

V50C6036

**WedgeView, Color Camera,
High Resolution, 3.6 mm lens**

- 480 TVL
- 0.6 lux @ F1.5
- Input Power: 12 VDC or 24 VAC
- Dimensions: 3.54"W x 2.6"H x 5.75"D

ALSO AVAILABLE:

V50C6029

**WedgeView Series, High Resolution,
Color Camera with 0.6 lux @ F1.5, 2.9 mm**

- 480 TVL

V50C6060

**WedgeView Series, High Resolution,
Color Camera with 0.6 lux @ F1.5, 6 mm**

- 480 TVL

V50C6080

**WedgeView Series, High Resolution,
Color Camera with 0.6 lux @ F1.5, 8 mm**

- 480 TVL

V50C6120

**WedgeView Series, High Resolution,
Color Camera with 0.6 lux @ F1.5, 12 mm**

- 480 TVL

V50C6160

**WedgeView Series, High Resolution,
Color Camera with 0.6 lux @ F1.5, 16 mm**

- 480 TVL

ADI Ordering Information



ADI Ordering Information



V50B6029

WedgeView Series, High Resolution,
Black and White Camera with 0.08 lux @ F1.5, 2.9 mm

- 570 TVL



V50B6060

WedgeView Series, High Resolution,
Black and White Camera with 0.08 lux @ F1.5, 6 mm

- 570 TVL



V50B6080

WedgeView Series, High Resolution,
Black and White Camera with 0.08 lux @ F1.5, 8 mm

- 570 TVL



V50B1080

WedgeView Series, Standard Resolution,
Black and White Camera with 0.06 lux @ F1.5, 8 mm

- 410 TVL



V50B1029

WedgeView Series, Standard Resolution,
Black and White Camera with 0.06 lux @ F1.5, 2.9 mm

- 410 TVL



V50B1036

WedgeView Series, Standard Resolution,
Black and White Camera with 0.06 lux @ F1.5, 3.6 mm

- 410 TVL

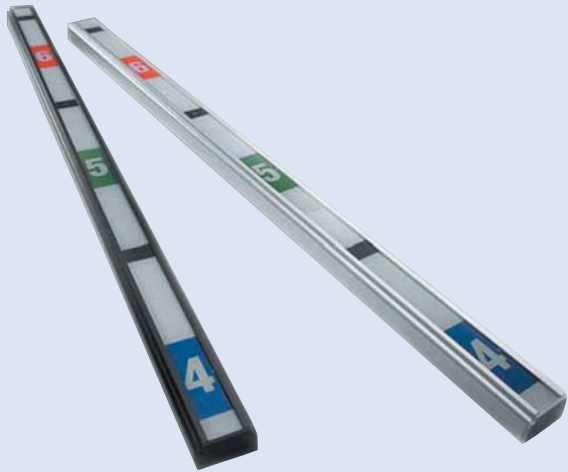


V50B1060

WedgeView Series, Standard Resolution,
Black and White Camera with 0.06 lux @ F1.5, 6 mm

- 410 TVL

Additional models are available depending on your exact requirements. For ordering information, visit www.honeywellvideo.com or contact Inside Sales at 1-800-796-2288.



ExitView® Series

The ExitView Series is designed to help prevent shrinkage, robberies and other retail losses by capturing clear, high quality images and measuring heights with a functional height strip. The ExitView is also discreet, with décor-matching options and is pre-focused making installations an easy process.

- 350 TVL
- 3.7 mm semi-pinhole F2.0
- 1/3" CCD color camera
- Field of View: 66" H x 52" V
- Sensitivity: 0.9 lux @ F2.0
- Power: 12 VDC (supply included)
- Extruded aluminum housing
- Optional 15° angled adapter available in black or silver

HSS37NS

ExitView, Silver Housing with Height Strip Window



ADI Ordering Information



HSB37NS

ExitView, Black Housing with Height Strip Window



HSS37NB

ExitView, Silver Housing with Black Window



HSB37NB

ExitView, Black Housing with Black Window



LENSES

Honeywell offers world-class lenses for both indoor and outdoor performance. These lenses provide customers with the ability to see high contrast, clear and detailed pictures of subjects in daylight, low light and near infrared light. Designed with sophisticated optics for superior light gathering and the ability to work seamlessly with our camera line, Honeywell's lenses provide a complete surveillance solution with unsurpassed performance.



Day/Night Vari-focal Lenses

The Day/Night DC Vari-focal Auto Iris Lenses deliver clear, sharp, color images in daylight and black and white images in darkness using near infrared illumination without the need to refocus the lens.

- Widest range Day/Night Vari-focal lens available in its class
- Extremely fast maximum aperture up to F0.95
- Designed for use under visible and IR light
- Focus and zoom tightening mechanisms are separate from ring for accurate setup and installation

ADI Ordering Information



HLD5V50DNL 5-50 mm Auto Iris Lens

- 1/3"
- 5-50 mm
- F1.6
- Aspherical Vari-focal lens



HLD27V13DNL 2.7-13.5 mm Auto Iris Lens

- 1/3"
- 2.7-13.5 mm
- F1.3
- Aspherical Vari-focal lens



HLD29V8DNL 2.9-8 mm Auto Iris Lens

- 1/3"
- 2.9-8 mm
- F0.95
- Aspherical Vari-focal lens

Cameras and Domes | LENSES



System Series Vari-focal Lenses

Honeywell's System Series lenses combine the highest quality aspherical glass optics, lightweight construction and durability to ensure the highest quality image possible.

- Installation flexibility through Vari-focal length lens allows the installer to obtain the required field of view quickly and easily
- Reduced camera set-up time by eliminating the need for lens substitution
- One lens replaces many fixed focal length lenses

HLD5V50F13L

5-50 mm Auto Iris Lens

- 1/3"
- 5-50 mm
- F1.3
- DC Auto Iris lens



ADI Ordering Information



HLD28V8F95L

2.8-8 mm Auto Iris Lens

- 1/3"
- 2.8-8 mm
- F0.95
- DC Auto Iris lens



HLD25V6F12L

2.5-6 mm Auto Iris Lens

- 1/3"
- 2.5-6 mm
- F1.2
- DC Auto Iris lens



HLM5V50F13

5-50 mm Manual Iris Lens

- 1/3"
- 5-50 mm
- F1.3
- Manual Iris lens



HLM28V8F95

2.8-8 mm Manual Iris Lens

- 1/3"
- 2.8-8 mm
- F0.95
- Manual Iris lens



HLM25V6F12

2.5-6 mm Manual Iris Lens

- 1/3"
- 2.5-6 mm
- F1.2
- Manual Iris lens



HOUSINGS AND MOUNTS

Honeywell's housings and mounts are the perfect accessories to complete your camera installation, and have been designed to withstand the most demanding indoor and outdoor environments. They provide affordability and space efficiency without sacrificing performance.

HHC12 Series

The new HHC12 Series line of environmental housings are stylish and functional camera enclosures designed to simplify installations. The HHC12 housing is constructed of die-cast and extruded aluminum with a two-tone gray epoxy powder coating make it attractive, durable, and corrosion resistant. IP66 weather and dust proofing make the housing suitable for all indoor and outdoor applications.

ADI Ordering Information



HHC1200



HHC1200 HHC1200 Housing

HHC1200 protects Honeywell box cameras from the indoor and outdoor environments.

- Die-cast, aluminum construction
- Epoxy coated for corrosion resistance
- Integrated "Flex-mount" adjustable mounting track
- Dual positive locking clamps
- Indoor/outdoor use



HHC12WM



HHC12WM HHC1200 with Wall Mount Option

Same as HHC1200 with wall-mount (HHMW13) and sunshield included.

- 360° pan, 70° tilt
- Up to 30 lb. load
- Indoor/outdoor use



HHC12WM2



HHC12WM2 HHC1200 with Wall Mount and Heater and Blower

Same as HHC12WM with 24 VAC/20 W heater and blower included.



HHMW13



HHMW13 Medium Duty Wall Mount for HHC1200 Enclosure

30 lb. wall-mount for Honeywell HHC1200 enclosures with cable feed through.

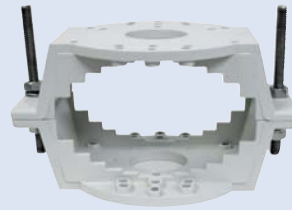
- 360° pan, 70° tilt
- Up to 30 lb. load
- Indoor/outdoor use

Cameras and Domes | HOUSINGS AND MOUNTS

HHMPMA

Pole Mount Adapter for HHC1200 with HHMW13 Wall Mount Adapter

- Up to 75 lb. load
- Indoor / outdoor use



ADI Ordering Information

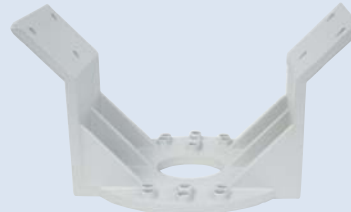


HHMPMA

HHMCMA

Corner Mount Adapter for HHC1200 with HHMW13 Wall Mount Adapter

- Up to 63.5 lb. load
- Indoor / outdoor use



HHMCMA

HHMC21J

Ceiling "J" Mount for HHC1200 Enclosure

"J" shaped mount to hang camera and housing from ceiling

- 21" mount
- 360° pan, 70° tilt
- Up to 30 lb. load
- Almond color epoxy powder coat on aluminum construction
- Indoor / outdoor use



HHMC21J

PMA7W

White Pole-Mount Adapter for HHMW13 Housing Wall Mount (or MDW1210W Wall Mount)

See page 53.



PMA7W

MC1600WT

Light Duty, 3-Axis Wall or Ceiling Camera Mount, 165 Deg. Tilt, White

The MC1600WT mount is ideal for mounting the Honeywell box cameras.

- High impact ABS white plastic
- 360° pan, -120°/+45° tilt
- Up to 11 lb. load



MC1600WT

ALSO AVAILABLE:

MC1600BK

Light Duty, 3-Axis Wall or Ceiling Camera Mount, 165 Deg. Tilt, Black



MC1600BK

MCWS07LB

Light Duty, 3-Axis Wall or Ceiling Camera Mount, 225 Deg. Tilt, Black



MCWS07LB

MCWS07LG

Light Duty, 3-Axis Wall or Ceiling Camera Mount, 225 Deg. Tilt, Gray



MCWS07LG

ADI Ordering Information



AD10FH 10" Pendant-Version Fixed-Dome Housing

Honeywell's 10" pendant dome housing is ideal for indoor surveillance applications.

- Support for numerous Honeywell camera/lens combinations
- Built-in thumb-screws for precise horizontal and vertical positioning during installation—no tools are required
- 18" section of conduit included
- Optical-grade cell cast acrylic viewing window

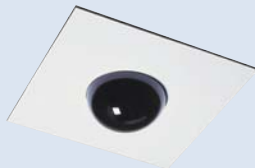
ALSO AVAILABLE:

AD10BM

Beam Mount for AD10FH

AD10WM

14" Wall Mount for AD10FH



AD10FCH

10" Ceiling Tile Fixed-Dome Housing

The AD10FCH (false ceiling version) is a quick-installing replacement for a standard 2' x 2' ceiling tile. Also included is a 2' section of ceiling grid T-bar for 2' x 4' installations.



AD12EFHT

12" Dome Housing, Wall Mount

The Outdoor AD12EFHT Series of Housings are designed for fixed camera applications in an outdoor environment. They feature a 12" smoked dome and white UV resistant upper housing. The unit is offered with optional heater/blower kits and various mounting options.

INFRARED ILLUMINATORS

Infrared illuminators enable you to get the most out of your black and white or True Day/Night cameras. The Infrared light reflects back into the camera, resulting in a superior night time image. With infrared illuminator, picture quality can be enhanced without adding lighting that can be inconvenient or disruptive in areas such as residential neighborhoods.



LumaView® Series

Offering flexible bulb options, the LumaView Series of IR illuminators provides unmatched performance and flexibility. The LumaView enclosures are built to IP66 to endure some of nature's harshest elements. Bulb options provide a variety of spot sizes and shapes as well as three different levels in IR light.

SWX200F51

4-bulb (200 W) Housing, Flood (60 Deg.) 715 nm, Overt, Filter

- Bulb Power: 50 W each (200W Max Total)
- Power: 12 VAC, 18 A nominal
- 460' Illumination distance
- >4000 hour bulb life
- Near IR

ALSO AVAILABLE:

SWX200S51

4-bulb (200 W) Housing, Spot (10 Deg.) 715 nm, Overt, up to ~ 495'

SWX200S52

4-bulb (200 W) housing, Spot (10 Deg.) 850 nm, Semi-Covert, up to ~ 325'

SWX200S53

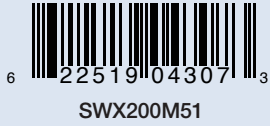
4-bulb (200 W) Housing, Spot (10 Deg.) 950 nm, Full Covert, up to ~ 250'



ADI Ordering Information



ADI Ordering Information



SWX200M51

4-bulb (200 W) Housing, Medium Flood (24 Deg.)
715 nm, Overt, up to ~ 275'



SWX200M52

4-bulb (200 W) Housing, Medium Flood (24 Deg.)
850 nm, Semi-Covert, up to ~ 225'



SWX200M53

4-bulb (200 W) Housing, Medium Flood (24 Deg.)
950 nm, Full-Covert, up to ~ 200'



SWX200F52

4-bulb (200 W) Housing, Flood (60 Deg.)
850 nm, Semi-Covert, up to ~ 200'



SWX200F53

4-bulb (200 W) Housing, Flood (60 Deg.)
950 nm, Full-Covert, up to ~ 200'

SWX75F71

Single bulb (75 W) Housing, Flood (40 Deg.) 715 nm, Overt, Filter

- Bulb Power: 75 W
- Power: 12 VAC, 6 A nominal
- 295' illumination distance
- >4000 hour bulb life
- Near IR



ALSO AVAILABLE:

SWX75S71

Single bulb (75 W) Housing, Spot (15 Deg.)
715 nm, Overt, up to ~ 195'

SWX75S72

Single bulb (75 W) Housing, Spot (15 Deg.)
850 nm, Semi-Covert, up to ~ 165'

SWX75S73

Single bulb (75 W) Housing, Spot (15 Deg.)
950 nm, Full Covert, up to ~ 135'

SWX75M71

Single bulb (75 W) Housing, Medium Flood (25 Deg.)
715 nm, Overt, up to ~ 125'

SWX75M72

Single bulb (75 W) Housing, Medium Flood (25 Deg.)
850 nm, Semi-Covert, up to ~ 100'

SWX75M73

Single bulb (75 W) Housing, Medium Flood (25 Deg.)
950 nm, Full Covert, up to ~ 85'

SWX75F72

Single bulb (75 W) Housing, Flood (40 Deg.)
850 nm, Semi-Covert, up to ~ 100'

SWX75F73

Single bulb (75 W) Housing, Flood (40 Deg.)
950 nm, Full Covert, up to ~ 75'

ADI Ordering Information





The Puck Series

The Puck Series is ideal for illuminating smaller areas cost effectively. The Puck Series has 25 IR LEDs with up to 40' of illumination distance. With its impact-and scratch-resistant housing, the Puck Series fits both indoor and outdoor use and can be mounted on ceilings (360° sweep) or walls (±30° sweep). The Puck Series lens rotation adjusts the infrared beam sweep positions.

ADI Ordering Information



SWIR-AC

875 nm IR Illuminator, Combined Wide and Narrow Sweep, 24 VAC Input



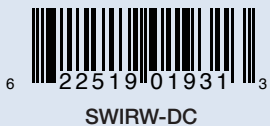
SWIR-DC

875 nm IR Illuminator, Combined Wide and Narrow Sweep, 12 VDC Input



SWIRW-AC

875 nm IR Illuminator, Wide Sweep, 24 VAC Input



SWIRW-DC

875 nm IR Illuminator, Wide Sweep, 12 VDC Input

INDOOR MINI-DOMES

Indoor mini-domes are all inclusive units, combining camera, lens, and housing into a single package that is easy-to-install, and a good fit for retail and commercial applications. Honeywell's indoor mini-domes are available in many different sizes, lens options and other configurations.



KD5 Series

The KD5 Series is perfect for the most demanding indoor surveillance projects. With numerous combinations of cameras, lenses, domes and trim rings, you're sure to find the right dome solution for your project.

- 1/3" CCD
- 5" dome
- 4 main body types: Bubble - Clear or Smoked, Trim Ring - Black or White
- Adjustable camera mount and inner liner included
- Installs into standard 4" x 4" x 2-1/8" electrical box
- Optional UTP interface (contact Inside Sales at 1-800-796-2288)
- 470 TVL
- 0.9 lux @ F1.2
- Auto gain control
- Power: 24 VAC
- All units come with aspherical Vari-focal CS mount lenses

KD5KA41211

High Resolution Color Fixed Dome Camera

24 VAC Power, 2.8-8 mm MIVF Lens, Smoke Bubble with Black Trim Ring

ALSO AVAILABLE:

KD5KA4121A

High Resolution Color Fixed Dome Camera

24 VAC Power, 2.8-8 mm AIVF lens option, Smoke Bubble with Black Trim Ring

KD5KA4121E

High Resolution Color Fixed Dome Camera

24 VAC Power, 5-50 mm AIVF lens option, Smoke Bubble with Black Trim Ring

KD5KA4121G

High Resolution Color Fixed Dome Camera

24 VAC Power, 5-50 mm AIVF lens option, Smoke Bubble with Black Trim Ring

ADI Ordering Information



KD5KA41211



KD5KA4121A



KD5KA4121E



KD5KA4121G

Cameras and Domes | INDOOR MINI-DOMES

ADI Ordering Information



KD5KA41111

High Resolution Color Fixed Dome Camera

24 VAC Power, 2.8-8 mm MIVF Lens, Smoke Bubble with White Trim Ring



ALSO AVAILABLE:

KD5KA4111A

High Resolution Color Fixed Dome Camera

24 VAC Power, 2.8-8 mm AIVF lens option, Smoke Bubble with White Trim Ring



KD5KA4111E

High Resolution Color Fixed Dome Camera

24 VAC Power, 5-50 mm AIVF lens option, Smoke Bubble with White Trim Ring



KD5KA4111G

High Resolution Color Fixed Dome Camera

24 VAC Power, 5-50 mm AIVF lens option, Smoke Bubble with White Trim Ring



KD5KA40111

High Resolution Color Fixed Dome Camera

24 VAC Power, 2.8-8 mm MIVF Lens, Clear Bubble with White Trim Ring



ALSO AVAILABLE:

KD5KA4011A

High Resolution Color Fixed Dome Camera

24 VAC Power, 2.8-8 mm AIVF lens option, Clear Bubble with White Trim Ring



KD5KA4011E

High Resolution Color Fixed Dome Camera

24 VAC Power, 5-50 mm AIVF lens option, Clear Bubble with White Trim Ring



KD5KA4011G

High Resolution Color Fixed Dome Camera

24 VAC Power, 5-50 mm AIVF lens option, Clear Bubble with White Trim Ring



HD3 Series

The HD3 Series of indoor domes is ideal for most surveillance applications. The series is versatile, cost-effective, and contains a 4-9 mm Vari-focal Auto Iris for various lighting conditions and field of view. HD3 installs quickly and easily with only a two-wire connection one for video, one for power and provides a sharp image in low-light conditions.

HD3VC4HR

High Resolution, 3" Indoor Color Mini-Dome Camera

- 1/3" CCD
- 470 TVL
- 360° rotation / 90° tilt
- Sensitivity: 2.0 lux @ F1.6
- 4-9 mm Vari-focal Auto Iris lens included
- Automatic backlight compensation
- Automatic gain control
- Power: 12 VDC / 24 VAC with line lock



ADI Ordering Information



HD3VC4HR

HD3VC4A

Standard Resolution, 3" Indoor Color Mini-Dome Camera

- 1/3" CCD
- 330 TVL
- 360° rotation / 90° tilt
- Sensitivity: 1.7 lux @ F1.6
- 4-9 mm Vari-focal Auto Iris lens included
- Automatic backlight compensation
- Automatic gain control
- Power: 12 VDC / 24 VAC with line lock



HD3VC4A

ADI Ordering Information



HD3VM4A Standard Resolution, 3" Indoor Black and White Mini-Dome Camera

- 1/3" CCD
- 380 TVL
- 360° rotation / 90° tilt
- Sensitivity: 0.5 lux @ F1.6
- 4-9 mm Vari-focal Auto Iris lens included
- Automatic backlight compensation
- Automatic gain control
- Power: 12 VDC / 24 VAC with line lock



HD2 Series HD2FC1 Standard Resolution, 2" Color Mini-Dome Camera

HD2 Series

A versatile, highly compact design, the HD2 Series from Honeywell offers design and install flexibility with its ability to mount on ceilings or walls. With two fixed lens options included and Auto Electronic Shutter for extreme lighting conditions, the HD2 is ready for immediate installation in your surveillance applications.

- 1/4" CCD
- 330 TVL
- Fixed lenses: 3 and 6 mm
- Sensitivity: 3.2 lux @ F2.0
- Automatic gain control (auto)
- Backlight compensation
- Power: 12 VDC



HD2FM1 Standard Resolution, 2" Black and White Mini-Dome Camera

- 1/3" CCD
- 380 TVL
- Fixed lenses: 3.8 and 8 mm
- Sensitivity: 0.8 lux @ F2.0
- Automatic gain control (on/off)
- Backlight compensation
- Power: 12 VDC

OUTDOOR MINI-DOMES

Honeywell's indoor/outdoor mini-dome cameras offer an excellent balance of rugged durability and aesthetic appeal. With many different mounting and profile options, there is a Honeywell indoor/outdoor mini-dome to suit nearly every surveillance application.

HD4VC4HR

Super High Resolution Vandal Resistant Indoor/Outdoor Color Dome Camera with 3.3-12 mm Vari-focal, Auto Iris lens

The newest member of Honeywell's fixed dome camera family is the HD4VC4HR.

- 530 TVL
- Sensitivity: 0.8 lux @ F1.5
- 3.3-12 mm Vari-focal Auto Iris lens
- Die cast housing
- Polycarbonate dome with security screws
- 3-D gimbal for flexible configuration
- Power: 12 VDC/24 VAC (Line Lock External 24 VAC only)
- Vandal resistant aluminum alloy housing with polycarbonate dome
- Surface mount



ADI Ordering Information



MAGNAVIEW®/PRIMAVIEW® MODULAR CAMERA SYSTEM

MagnaView®/PrimaView® Modular Camera System

Honeywell's modular camera system allows you to choose from 9 different housing options, 10 different camera options and 9 different lens options. With solutions for indoor and outdoor use, all are vandal resistant and offer superior image quality and installation flexibility. The MagnaView Series offers metal housing construction while the PrimaView Series offers polycarbonate. After selecting your desired camera module and corresponding lens, select either a PrimaView or MagnaView housing to complete your modular camera. The most popular versions of MagnaView and PrimaView are also available as fully configured systems. See page 38.



MAGNAVIEW® HOUSINGS

HEV28RC

Modular Housing, Round Housing with Coax Interface

ALSO AVAILABLE:

HEV28RTP

Round Housing with UTP Interface



ADI Ordering Information



Cameras and Domes | INDOOR/OUTDOOR MINI-DOMES

ADI Ordering Information



HEV28SC
Square Housing, V28S with Coax Interface



ALSO AVAILABLE:
HEV28STP
Square Housing, V28S with UTP Interface



HEV28GC
Gripless Housing, V28G with Coax Interface



ALSO AVAILABLE:
HEV28GTP
Gripless Housing, V28G with UTP Interface



HEV28FC
Flush Housing, V28F with Coax Interface



ALSO AVAILABLE:
HEV28FTP
Flush Housing, V28F with UTP Interface



HEV28PC
Surface/Flush Housing, V28P with Coax Interface



ALSO AVAILABLE:
HEV28PTP
Surface/Flush Housing, V28P with UTP Interface



HEV28CC
Corner Mount Housing, V28C with Coax Interface



ALSO AVAILABLE:
HEV28CTP
Corner Mount Housing, V28C with UTP Interface

PRIMAVIEW® HOUSINGS

HEC12C

Surface/Flush Housing with Coax Interface

ALSO AVAILABLE:

HEC12TP

Surface/Flush Housing with UTP Interface



ADI Ordering Information



HEC12C



HEC12TP

HEC14C

Surface/Flushmount Housing with Coax Interface

ALSO AVAILABLE:

HEC14TP

Surface/Flush Housing with UTP Interface



HEC14C



HEC14TP

HEV29AC

Low-Profile Angle Dome Housing with Coax Interface

ALSO AVAILABLE:

HEV29ATP

Angle Dome Housing with UTP Interface



HEV29AC



HEV29ATP

MAGNAVIE®/PRIMAVIEW® CAMERA MODULES

HCGC48

High Resolution, Color Mini-Dome Camera Module

- 1/3" CCD
- Resolution: 480 TVL
- Sensitivity: 0.6 lux @ F1.5



HCGC48

Cameras and Domes | INDOOR/OUTDOOR MINI-DOMES

ADI Ordering Information



HCGD48

High Resolution, True Day/Night, Color Camera Module

- 1/3" CCD
- 480 TVL
- Sensitivity: 0.3 lux @ F1.5
- True Day/Night (mechanical IR cut filter)



HCGD35

Standard Resolution, True Day/Night, Color Camera Module

- 1/3" CCD
- 350 TVL
- Sensitivity: 0.3 lux @ F1.5
- True Day/Night (mechanical IR cut filter)



HCGW48

High Resolution, Wide Dynamic Camera, Color Camera Module

- 1/3" CCD
- 480 TVL
- Sensitivity: 0.3 lux @ F1.5
- 52 dB Dynamic Range



HCGWD48

High Resolution, Wide Dynamic Camera, True Day/Night Color Camera Module

- 1/3" CCD
- 480 TVL
- Sensitivity: 0.3 lux @ F1.5
- True Day/Night (mechanical IR cut filter)
- 52 dB Dynamic Range



HCGC35

Standard Resolution, Color Camera Module

- 1/3" CCD
- 350 TVL
- Sensitivity: 0.5 lux @ F1.5



HCGB41

Standard Resolution, Black and White Camera Module

- 1/3" CCD
- 410 TVL
- Sensitivity: 0.06 lux @ F1.5



HCGB57

High Resolution, Black and White Camera Module

- 1/3" CCD
- 570 TVL
- Sensitivity: 0.08 lux @ F1.5

MAGNAVIEW®/PRIMAVIEW® QUICK CHANGE LENSES

HLQAV1

4-9 mm Auto Iris, Vari-focal Quick Change Lens

- Vari-Focal Auto-Iris lens
- 68° - 32° Horizontal Field of View
- 50° - 24° Vertical Field of View
- F1.5



ADI Ordering Information



HLQAV1

HLQAV2

2.6-6 mm Auto Iris, Vari-focal Lens

- 99° - 48° Horizontal Field of View
- 75° - 36° Vertical Field of View
- F1.4



HLQAV2

HLQAV3

9-22 mm Auto Iris, Vari-focal Lens

- 29° - 13° Horizontal Field of View
- 22° - 10° Vertical Field of View
- F2.0



HLQAV3

HLQ029

2.9 mm Fixed Lens

- 99° H – 67° V
- F2.0



HLQ029

HLQ036

3.6 mm Fixed Lens

- 74° H – 55° V
- F2.0



HLQ036

HLQ060

6.0 mm Fixed Lens

- 42° H – 32° V
- F2.0



HLQ060

HLQ080

8.0 mm Fixed Lens

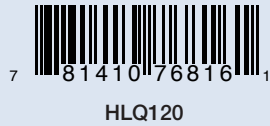
- 32° H – 24° V
- F2.0



HLQ080

Cameras and Domes | INDOOR/OUTDOOR MINI-DOMES

ADI Ordering Information



HLQ120
12 mm Fixed Lens

- 22° H – 17° V
- F2.0



HLQ160
16 mm Fixed Lens

- 15° H – 11° V
- F2.0



HLQVP4
Variety Pack: 2.9, 3.6, 6.0, 8.0 mm Fixed Lenses

MAGNAVIEW®/PRIMAVIEW® PRE-CONFIGURED CAMERA SYSTEM



MagnaView®/PrimaView® Pre-Configured Camera System

MagnaView is Honeywell's premium camera line of vandal resistant surveillance solutions. Some of the strongest solutions available today, MagnaView cameras are used indoors and outdoors in the toughest environments imaginable. Additional versions of these systems are available in modular form. See page 33.

- 1/3" CCD
- Weatherproof
- 3-D gimbal for maximum lens rotation and placement
- Able to withstand direct impact from a 10lb. sledgehammer
- 480 TVL
- Fully integrated Vandal Dome
- Labor savings and easy mounting
- Flexibility to upgrade

MAGNAVIEW® PRE-CONFIGURED SYSTEM



HD28W4HR6
HEV28 Housing, Wide-Dynamic High Resolution Color Camera with 2.6-6 mm Vari-focal, Auto Iris lens

- 1/3" CCD
- 480 TVL
- 52 dB Dynamic Range
- Sensitivity: 1.0 lux @ F1.5
- 2.6-6 mm VFAL lens



HD28W4HR9
HEV28 Housing, Wide-Dynamic High Resolution Color Camera with 4-9 mm Vari-focal, Auto Iris lens

- 1/3" CCD
- 480 TVL Color
- Sensitivity: 1.0 lux @ F1.5
- 4-9 mm VFAL lens
- 52 dB Dynamic Range

HD28D4HR6

HEV28 Housing, True Day/Night High Resolution Color Camera with 2.6-6 mm Vari-focal, Auto Iris lens

- 1/3" CCD
- 480 TVL
- Sensitivity: 0.3 lux @ F1.5
- 2.6-6 mm VFAI lens
- True Day/Night (mechanical IR cut filter)

ADI Ordering Information



HD28D4HR9

HEV28 Housing, True Day/Night High Resolution Color Camera with 4-9 mm Vari-focal, Auto Iris lens

- 1/3" CCD
- 480 TVL
- Sensitivity: 0.3 lux @ F1.5
- 4-9 mm VFAI lens
- True Day/Night (mechanical IR cut filter)



HD28C4HR6

HEV28 Housing, High Resolution Color Camera with 2.6-6 mm Vari-focal, Auto Iris lens

- 1/3" CCD
- 480 TVL Color
- Sensitivity: 0.6 lux @ F1.5
- 2.6-6 mm VFAI lens
- 52 dB Dynamic Range



HD28C4HR9

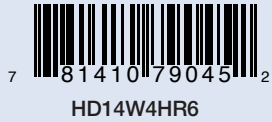
HEC14 Housing, High Resolution Color Camera with 4-9 mm Vari-focal, Auto Iris lens

- 1/3" CCD
- 480 TVL Color
- Sensitivity: 0.6 lux @ F1.5
- 52 dB Dynamic Range
- 4-9 mm VFAI lens



PRE-CONFIGURED PRIMAVIEW®

ADI Ordering Information



HD14W4HR6

HEC14 Housing, Wide-Dynamic High Resolution Color Camera with 2.6-6 mm Vari-focal, Auto Iris lens

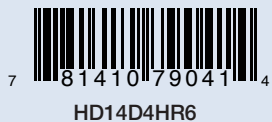
- 1/3" CCD
- 480 TVL Color
- Sensitivity: 1.0 lux @ F1.5
- 52 dB Dynamic Range
- 2.6-6 mm VFAI lens



HD14W4HR9

HEC14 Housing, Wide-Dynamic High Resolution Color Camera with 4-9 mm Vari-focal, Auto Iris lens

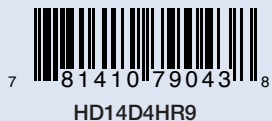
- 1/3" CCD
- 480 TVL Color
- Sensitivity: 1.0 lux @ F1.5
- 52 dB Dynamic Range
- 4-9 mm VFAI lens



HD14D4HR6

HEC14 Housing, True Day/Night High Resolution Color Camera with 2.6-6 mm Vari-focal, Auto Iris lens

- 1/3" CCD
- 480 TVL Color
- Sensitivity: 0.3 lux @ F1.5
- 2.6-6 mm VFAI lens
- True Day/Night (mechanical IR cut filter)



HD14D4HR9

HEC14 Housing, True Day/Night High Resolution Color Camera with 4-9 mm Vari-focal, Auto Iris lens

- 1/3" CCD
- 480 TVL Color
- Sensitivity: 0.3 lux @ F1.5
- 4-9 mm VFAI lens
- True Day/Night (mechanical IR cut filter)

HD14C4HR6

HEC14 Housing, High Resolution Color Camera with 2.6-6 mm Vari-focal, Auto Iris lens

- 1/3" CCD
- 480 TVL
- Sensitivity: 0.6 lux @ F1.5
- 2.6-6 mm VFAI lens

ADI Ordering Information



HD14C4HR9

HEC14 Housing, High Resolution Color Camera with 4-9 mm Vari-focal, Auto Iris lens

- 1/3" CCD
- 480 TVL Color
- Sensitivity: 0.6 lux @ F1.5
- 4-9 mm VFAI lens



PRIMAVIEW® HD16 SERIES

HD16CC480

High Resolution, Color Dome Camera with 5-50 mm Vari-focal, Auto Iris lens, surface or flush housing, clear dome and coax connection

- 480 TVL Color
- Sensitivity: 0.8 lux @ F1.7
- 5-50 mm VFAI aspherical lens (CS mount)
- 12 VDC or 24 VAC, Auto sensing (Line Lock External 24 VAC only)
- Clear Polycarbonate dome with dome liner



ALSO AVAILABLE:

HD16CD480

- High Resolution, 480 TVL Color
- Sensitivity: 0.3 lux @ F1.7
- True Day/Night (mechanical IR cut filter)



HD16CW480

- High Resolution, 480 TVL Color, Wide Dynamic
- Sensitivity: 1.0 lux @ F1.7
- 52 dB Dynamic Range



HD16CDW480

- High Resolution, 480 TVL Color
- Sensitivity: 0.4 lux @ F1.7
- 52 dB Dynamic Range
- True Day/Night (mechanical IR cut filter)



HD16CC350

- Standard Resolution, 350 TVL Color
- Sensitivity: 0.7 lux @ F1.7
- True Day/Night (mechanical IR cut filter)



Cameras and Domes | INDOOR/OUTDOOR MINI-DOMES

ADI Ordering Information



HD16CD350

- Standard Resolution, 350 TVL Color
- Sensitivity: 0.2 lux @ F1.7
- True Day/Night (mechanical IR cut filter)



HD16TD480

- UTP (Twisted Pair) Interface
- High Resolution, 350 TVL Color
- Sensitivity: 0.3 lux @ F1.7
- True Day/Night (mechanical IR cut filter)



HD16TW480

- UTP (Twisted Pair) Interface
- High Resolution, 480 TVL Color
- Sensitivity: 1.0 lux @ F1.7
- True Day/Night (mechanical IR cut filter)



HD16TDW480

- UTP (Twisted Pair) Interface
- High Resolution, 350 TVL Color, True Day/Night
- Sensitivity: 0.4 lux @ F1.7
- True Day/Night (mechanical IR cut filter)
- 52 dB Dynamic Range



HD16TC350

- UTP (Twisted Pair) Interface
- Standard Resolution, 350 TVL Color
- Sensitivity: 0.8 lux @ F1.7



HD16TD350

- UTP (Twisted Pair) Interface
- Standard Resolution, 350 TVL Color, True Day/Night
- Sensitivity: 0.2 lux @ F1.7
- True Day/Night (mechanical IR cut filter)



HD16TC480

- UTP (Twisted Pair) Interface
- 480 TVL Color
- Sensitivity: 0.81 lux @ F1.7

ACCESSORIES FOR INDOOR/OUTDOOR MINI-DOMES

HEC12/14-PK
Pendant Mount Kit for HEC12 and HEC14




ADI Ordering Information

7 81410 77192 5
HEC12/14-PK

HEC12/14-WK
Wall Mount Kit for HEC12 and HEC14




7 81410 77193 2
HEC12/14-WK

HEV28R-WK
Wall Mount Kit for HEV28R




7 81410 77195 6
HEV28R-WK

HEV28R-PK
Pendant Mount Kit for HEV28R



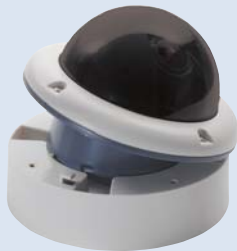

7 81410 77194 9
HEV28R-PK

Cameras and Domes | INDOOR/OUTDOOR MINI-DOMES

ADI Ordering Information



HEV28C-CSS
Brushed Stainless Steel Front Enclosure for HEV28C



HDRK16T
Replacement Half Tint Dome for HD16



HD16-PK
Pendant Mount Kit for HD16



HD16-WK
Wall Mount Kit for HD16



The V25 Armor Dome Series

- 1/3" CCD
- Heavy-duty steel enclosure secured using tamper-resistant screws for added durability
- Easy to install — the attractive and rugged housing will blend into any interior
- Compatible with Quick Change Lenses 2.9 mm to 12 mm
- Withstands a blow from an 8 lb. sledgehammer
- Compact, no-scratch, polycarbonate dome
- Weather sealed, IP66 rated
- Flush mount

V25C6029

High Resolution Color Armor Dome Camera with 2.9 mm Electronic Iris, Fixed Lens

- 480 TVL
- Sensitivity: 0.6 lux @ F1.5
- 2.9 mm Electronic Iris fixed lens
- Compact, no-scratch, polycarbonate dome
- Weather sealed, IP66 rated enclosure
- Heavy-duty steel enclosure with tamper-resistant screws

ALSO AVAILABLE:

V25C1029

350 TVL, 0.5 lux @ F1.5, 2.9 mm lens

V25C6036

480 TVL, 0.6 lux @ F1.5, 3.6 mm lens

V25C6060

480 TVL, 0.6 lux @ F1.5, 6.0 mm lens

V25C6080

480 TVL, 0.6 lux @ F1.5, 8.0 mm lens

V25C6120

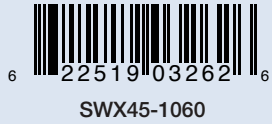
480 TVL, 0.6 lux @ F1.5, 12 mm lens

ADI Ordering Information



INTEGRATED DAY/NIGHT INDOOR/OUTDOOR MINI-DOME CAMERAS

ADI Ordering Information



SWX45-1060

Night Hawk Standard Resolution, True Day/Night Vandal Resistant Color Dome Camera with IR illuminators and 6.0 mm Auto Iris lens

- 12 near-IR LEDs to see objects up to 40 feet away in total darkness
- 380 TVL
- Sensitivity: 0 lux
- 6 mm Auto Iris lens @ F2.0
- Weather and vandal resistant housing
- Surface mount

ALSO AVAILABLE:

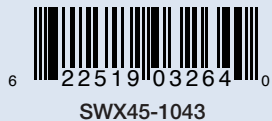
SWX45-1037

Night Hawk Standard Resolution, True Day/Night Vandal Resistant Color Dome Camera with IR illuminators and 3.7 mm Auto Iris lens



SWX45-1043

Night Hawk Standard Resolution, True Day/Night Vandal Resistant Color Dome Camera with IR illuminators and 4.3 mm Auto Iris lens



PTZ DOMES

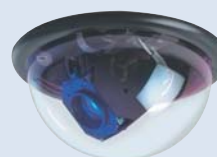
Honeywell's pan-tilt-zoom camera products come in an array of options to fit numerous surveillance applications. Whether your application is indoor, outdoor or has extreme environmental requirements, we have a PTZ product to fit your solution.

HD6 Series

The HD6 Series is the new generation of PTZ domes from Honeywell Video Systems. This Series is one of the highest performing domes in the market. With a large selection of cameras, the HD6 Series is fluid and its lightning fast pan-and-tilt movements makes it the ultimate dome.

- 5 cameras available including 25X TDN with telephoto zoom
- Variable pan speed 1/10° - 400° per second
- 3 two-minute PTZ Patterns (Auto Learn Function)
- 98 programmable pre-shots
- 10 programmable VectorScans (video guard tours)
- 16 sector IDs with 24-character on-screen displays
- 4 on-board alarm inputs
- Auto-pivot tracking
- Auto homing feature can also activate Tours and Patterns with dwell time up to 99 minutes
- "Flashback" feature recalls last PreShot or manual position
- Supports both Diamond and VCL protocols
- Built-in code translator provides compatibility with some 3rd party protocols
- Unshielded Twisted Pair (UTP) video option available
- Available in multiple configurations:
 - Indoor Pendant - Indoor Drop Ceiling - Weather - Pressurized - Rugged

Refer to HD6 Selection Guide for ordering information on pages 48-49.



Indoor Drop Ceiling



Rugged



Indoor Pendant



Weather



Pressurized

HD6 Series Camera Specifications

CAMERA	HD6A	HD6B	HD6C	HD6D	HD6E
Image Sensor	1/4" type EXview HAD CCD	1/4" type EXview HAD CCD	1/4" Progressive CCD	1/4" EXview CCD	1/4" EXview CCD
Lens	18X optical zoom, f=4.1 mm (wide) to 73.8 mm (tele), F1.4 to F3.0	18X optical zoom, f=4.1 mm (wide) to 73.8 mm (tele), F1.4 to F3.0	23X optical zoom, f=3.6 mm (wide) to 82.8 mm (tele), F1.6 to F3.7	23X optical zoom, f=3.8 (wide) to 87.4mm (tele), F1.6 to F3.8	25X optical zoom, f=3.8 (wide) to 95mm (tele), F1.6 to F3.7
Horizontal Resolution	> 470 TVL (NTSC) > 460 TVL (PAL)	> 470 TVL (NTSC) > 460 TVL (PAL)	> 470 TVL (NTSC) > 460 TVL (PAL)	> 470 TVL (NTSC) > 460 TVL (PAL)	> 470 TVL (NTSC) > 460 TVL (PAL)
Digital Zoom	12X (216X total zoom)	12X (216X total zoom)	4X (92X total zoom)	4X (92X total zoom)	4X (100x total zoom)
Angle of View (H)	48 degrees (wide end) to 2.8 degrees (tele end)	48 degrees (wide end) to 2.8 degrees (tele end)	54 degrees (wide end) to 2.5 degrees (tele end)	56.2 degrees (wide end) to 2.4 degrees (tele end)	56.2 degrees (wide end) to 2.2 degrees (tele end)
Minimum Illumination	0.7 lux (typical) (50 IRE) 0.05 lux (slow shutter mode at 1/4s)	0.7 lux (typical) (50 IRE) 0.05 lux (slow shutter mode at 1/4s) 0.01 lux (NightShot at 1/4s)	3.0 lux (typical) 0.2 lux (slow shutter mode at 1/4s) 0.02 lux (NightShot at 1/4s)	1.0 lux (30 IRE, AGC 34dB)	0.8 lux (30 IRE) 0.05 lux (IR filter OFF) 0.008 lux (IR filter ON, 128 fields)
S/N Ratio	More than 50dB	More than 50dB	More than 50dB	More than 49dB	> 50dB (AGC Off)

HD6 Series Selection Guide

Indoor

Drop Ceiling

Lower Dome/ Trim Color	Communication Type	18X Color NTSC	18X Day/Night NTSC	23X Day/Night NTSC	23X Color NTSC	25X Day/Night NTSC
Smoked/Black	1	HD6AD1N1	HD6BD1N1	HD6CD1N1	HD6DD1N1	HD6ED1N1
Smoked/Black	4	HD6AD1N4	HD6BD1N4	HD6CD1N4	HD6DD1N4	HD6ED1N4
Smoked/White	1	HD6AD2N1	HD6BD2N1	HD6CD2N1	HD6DD2N1	HD6ED2N1
Smoked/White	4	HD6AD2N4	HD6BD2N4	HD6CD2N4	HD6DD2N4	HD6ED2N4
Clear/Black	1	HD6AD4N1	HD6BD4N1	HD6CD4N1	HD6DD4N1	HD6ED4N1
Clear/Black	4	HD6AD4N4	HD6BD4N4	HD6CD4N4	HD6DD4N4	HD6ED4N4
Clear/White	1	HD6AD5N1	HD6BD5N1	HD6CD5N1	HD6DD5N1	HD6ED5N1
Clear/White	4	HD6AD5N4	HD6BD5N4	HD6CD5N4	HD6DD5N4	HD6ED5N4

Pendant (Wall or Ceiling Mount*)

Smoked/Black	1	HD6AP1N1	HD6BP1N1	HD6CP1N1	HD6DP1N1	HD6EP1N1
Smoked/Black	4	HD6AP1N4	HD6BP1N4	HD6CP1N4	HD6DP1N4	HD6EP1N4
Smoked/White	1	HD6AP2N1	HD6BP2N1	HD6CP2N1	HD6DP2N1	HD6EP2N1
Smoked/White	4	HD6AP2N4	HD6BP2N4	HD6CP2N4	HD6DP2N4	HD6EP2N4
Clear/Black	1	HD6AP4N1	HD6BP4N1	HD6CP4N1	HD6DP4N1	HD6EP4N1
Clear/Black	4	HD6AP4N4	HD6BP4N4	HD6CP4N4	HD6DP4N4	HD6EP4N4
Clear/White	1	HD6AP5N1	HD6BP5N1	HD6CP5N1	HD6DP5N1	HD6EP5N1
Clear/White	4	HD6AP5N4	HD6BP5N4	HD6CP5N4	HD6DP5N4	HD6EP5N4

Rugged (Wall or Ceiling Mount)

Smoked	1	HD6AR1N1	HD6BR1N1	HD6CR1N1	HD6DR1N1	HD6ER1N1
Smoked	4	HD6AR1N4	HD6BR1N4	HD6CR1N4	HD6DR1N4	HD6ER1N4
Smoked	1	HD6AR2N1	HD6BR2N1	HD6CR2N1	HD6DR2N1	HD6ER2N1
Smoked	4	HD6AR2N4	HD6BR2N4	HD6CR2N4	HD6DR2N4	HD6ER2N4
Clear	1	HD6AR4N1	HD6BR4N1	HD6CR4N1	HD6DR4N1	HD6ER4N1
Clear	4	HD6AR4N4	HD6BR4N4	HD6CR4N4	HD6DR4N4	HD6ER4N4
Clear	1	HD6AR5N1	HD6BR5N1	HD6CR5N1	HD6DR5N1	HD6ER5N1
Clear	4	HD6AR5N4	HD6BR5N4	HD6CR5N4	HD6DR5N4	HD6ER5N4

* Mount not included with Dome

1= Video over coax and 2-wire RS485 communications

4= Video over Unshielded Twisted Pair (UTP) and 2-wire RS485 communications

HD6 Series Selection Guide

Outdoor

Weather with Heater and/or Blower

(Wall, Corner, Parapet, Roof, Pole Mount*)

Lower Dome/ Trim Color	Communication Type	18X Color NTSC	18X Day/Night NTSC	23X Day/Night NTSC	23X Color NTSC	25X Day/Night NTSC
Smoked	1	HD6AW1N1	HD6BW1N1	HD6CW1N1	HD6DW1N1	HD6EW1N1
Smoked	4	HD6AW1N4	HD6BW1N4	HD6CW1N4	HD6DW1N4	HD6EW1N4
Clear	1	HD6AW4N1	HD6BW4N1	HD6CW4N1	HD6DW4N1	HD6EW4N1
Clear	4	HD6AW4N4	HD6BW4N4	HD6CW4N4	HD6DW4N4	HD6EW4N4

Pressurized with Heater and Blower

(Wall, Corner, Parapet, Roof, or Pole Mount*)

Smoked	1	HD6AE1N1	HD6BE1N1	HD6CE1N1	HD6DE1N1	HD6EE1N1
Smoked	4	HD6AE1NJ	HD6BE1NJ	HD6CE1NJ	HD6DE1NJ	HD6EE1NJ
Clear	1	HD6AE4N1	HD6BE4N1	HD6CE4N1	HD6DE4N1	HD6EE4N1
Clear	4	HD6AE4NJ	HD6BE4NJ	HD6CE4NJ	HD6DE4NJ	HD6EE4NJ
Smoked	RS485/14-Pin Connector	HD6AE1NA	HD6BE1NA	HD6CE1NA	HD6DE1NA	HDEE1NA
Clear	RS485/14-Pin Connector	HD6AE4NA	HD6BE4NA	HD6CE4NA	HD6DE4NA	HD6EE4NA

Rugged (Wall or Ceiling Mount)

Smoked with Fan only	1	HD6AR1NF	HD6BR1NF	HD6CR1NF	HD6DR1NF	HD6ER1NF
Clear with Fan only	1	HD6AR4NF	HD6BR4NF	HD6CR4NF	HD6DR4NF	HD6ER4NF
Smoked with Heater and Blower	4	HD6AR1NJ	HD6BR1NJ	HD6CR1NJ	HD6DR1NJ	HD6ER1NJ
Smoked with Heater and Blower	1	HD6AR1NH	HD6BR1NH	HD6CR1NH	HD6DR1NH	HD6ER1NH
Clear with Heater and Blower	1	HD6AR4NH	HD6BR4NH	HD6CR4NH	HD6DR4NH	HD6ER4NH
Clear with Heater and Blower	4	HD6AR4NJ	HD6BR4NJ	HD6CR4NJ	HD6DR4NJ	HD6ER4NJ

* Mount not included with Dome

1= Video over coax and 2-wire RS485 communications

4= Video over Unshielded Twisted Pair (UTP) and 2-wire RS485 communications

PTZ Dome Accessories

	Rapid Dome Gold Indoor Plug & Play	Rapid Dome Gold Indoor False Ceiling	Rapid Dome Gold Outdoor Wall Mount	Rapid Dome Gold Outdoor Soffit/Pendant Mount	Rapid Dome Gold Outdoor Pole/Roof Mount	Rapid Dome Gold Outdoor 1.5" NPT Mount	HD6 Indoor Pendant Mount	HD6 Indoor Ceiling Mount	HD6 Outdoor Weather	HD6 Outdoor Pressurized	HD6 Indoor/Outdoor Rugged
Mounts and Mount Adapters											
AD5PB80 Plug & Play Extension, 80mm (3")	X										
AD5PB300 Plug & Play Extension, 300mm (12")	X										
AD5PB600 Plug & Play Extension, 600mm (24")	X										
AD5PBNPT Plug & Play 1.5" NPT Indoor Adapter	X										
AD5WBGN Plug & Play Wall Mount with NVT TP Transmission	X										
AD8RMAW "Over the Roof" Mount Adapter for Wall Mount			X								
H8E-CB (formerly ADWCB), Corner Mounting Bracket			X								
ADPMAT Side pole mount bracket for pole/flat roof mount					X						
ADPMAW Side pole mount bracket for wall mount			X								
PRM100B Parapet roof mount, black						C		X	X	C	
PRM100W Parapet roof mount, white						C		X	X	C	
MDW1210W Indoor/Outdoor wall mount						C	X	X	X		
DWM19S Extreme condition wall mount						C		X	X		
DPM15 Indoor/Outdoor Pendant mount						C	X	X	X		
CMA18B Corner mount Adapter for MDW1210W						C	X	X	X		
CMA18W Corner mount Adapter for MDW1210W						C	X	X	X	X	
CMA18BS Corner mount Adapter for DWM19S						C		X	X		
PMA7W Pole mount Adapter for MDW1210W						C	X	X	X		
PMA18B Pole mount Adapter for DWM19S						C		X	X		
PMA18W Pole mount Adapter for DWM19S						C		X	X		
PMA18BS Pole mount Adapter for DWM19S								X	X	X	
Power Supplies											
HPTV2401S Single output, video and power protection, Indoor Enclosure	C	C	C	C	C	C	C	C	C	C	C
HPTV2401Z Single output, video, data and power protection, Indoor Enclosure	X	X	X	X	X	X	X	X	X	X	X
HPTV2401WPS Single output, video and power protection, NEMA 4 Enclosure			C	C	C	C		C	C	C	
HPTV2401WPZ Single output, video, data and power protection, NEMA 4 Enclosure			X	X	X	X		X	X	X	
HPTVWPPMK2 2" Pole mounting kit for HPTVWP					X	X		X	X	C	
HPTVWPPMK3 3" Pole mounting kit for HPTVWP					X	X		X	X	C	
HPTVWPPMK4 4" Pole mounting kit for HPTVWP					X	X		X	X	C	
Controllers											
HJZTP "All-in-one" Joystick telemetry controller	X	X	X	X	X	X	X	X	X	X	X
HEGS5000 PTZ, MUX/VCR, and HSX3208L switcher controller	C	C	C	C	C	C	X	X	X	X	X
Optional Accessories											
HCDC8TP Code distribution unit	X	X	X	X	X	X	X	X	X	X	X
HSX3208L Small scale looping matrix switcher, use with HEGS5000 keyboard	C	C	C	C	C	C	X	X	X	X	X
HMAX082-US 8 x 2 MaxCom Gold Matrix Switcher use with HKJMTP keyboard	X	X	X	X	X	X	C	C	C	C	C
HMAX162-US 16 x 2 MaxCom Gold Matrix Switcher use with HKJMTP keyboard	X	X	X	X	X	X	C	C	C	C	C

X = Recommended C = Compatible



Indoor Pendant



Indoor Drop Ceiling



Weather

HD6 VIP Series

The HD6 VIP Series is an extension of the HD6 product line. This HD6 VIP takes the HD6 PTZ dome and adds a TCP/IP digital video interface. The series is uniquely designed to provide smooth, fast response, excellent images and a large variety of features and mounting options. The integration with Honeywell's Digital Video Manager (DVM) permits system-wide digital integration of video from remote locations. This product is perfect for customers looking for a high-quality video PTZ dome with a TCP/IP digital interface.

- Basic IP dome features including static network addressing via ARP command, Web Server (browser) interface for setup, viewing and PTZ control and password protection to prevent unauthorized access
- Compression optimized for use with PTZ domes
 - Adjustable frame rate up to 30 fps NTSC, 25 fps PAL
- Resolutions supported (NTSC/PAL):
 - 704 x 480 / 704 x 576
 - 352 x 240 / 352 x 288
 - 176 x 112 / 176 x 144
 - 704 x 240 / 704 x 288
- DVM support - dome control is provided using VCL protocol
- Available in multiple configurations:
 - Indoor Pendant
 - Indoor Drop Ceiling
 - Weather

Refer to HD6 VIP Selection Guide for ordering information on page 52.

HD6 VIP Series Selection Guide

Indoor

	Lower Dome/ Trim Color	Communication Type	18X Color NTSC	18X Day/Night NTSC	22X Day/Night NTSC	23X Color NTSC	25X Day/Night NTSC
Dropped Ceiling/Hard Ceiling							
	Smoked/Black	TCP/IP	HD6AD1ND	HD6BD1ND	HD6CD1ND	HD6DD1ND	HD6ED1ND
	Smoked/White	TCP/IP	HD6AD2ND	HD6BD2ND	HD6CD2ND	HD6DD2ND	HD6ED2ND
	Clear/Black	TCP/IP	HD6AD4ND	HD6BD4ND	HD6CD4ND	HD6DD4ND	HD6ED4ND
	Clear/White	TCP/IP	HD6AD5ND	HD6BD5ND	HD6CD5ND	HD6DD5ND	HD6ED5ND
Pendant (Wall or Ceiling Mount*)							
	Smoked/Black	TCP/IP	HD6AP1ND	HD6BD1ND	HD6CD1ND	HD6DD1ND	HD6ED1ND
	Smoked/White	TCP/IP	HD6AP2ND	HD6BD2ND	HD6CD2ND	HD6DD2ND	HD6ED2ND
	Clear/Black	TCP/IP	HD6AP4ND	HD6BD4ND	HD6CD4ND	HD6DD4ND	HD6ED4ND
	Clear/White	TCP/IP	HD6AP5ND	HD6BD5ND	HD6CD5ND	HD6DD5ND	HD6ED5ND

Outdoor

	Lower Dome	Communication Type	18X Color NTSC	18X Day/Night NTSC	22X Day/Night NTSC	23X Color NTSC	25X Day/Night NTSC
Weather with Heater and/or Blower (Wall, Corner, Parapet, Roof, PoleMount*)							
	Smoked	TCP/IP	HD6AW1ND	HD6BW1ND	HD6CW1ND	HD6DW1ND	HD6EW1ND
	Clear	TCP/IP	HD6AW4ND	HD6BW4ND	HD6CW4ND	HD6DW4ND	HD6EW4ND

PTZ ACCESSORIES

Honeywell offers a complete line of accessories to allow a high degree of flexibility in mounting PTZ dome cameras.

MDW1210W

Heavy Duty Wall Mount in White Color

The MDW1210W wall mount is a heavy-duty outdoor mounting that has been designed specifically for use with the HD6 WeatherDome and the HD6 nitrogen pressurized dome housing.

- Aluminum construction
- White epoxy base
- Max load: 75 lbs.
- Max wind load: 130 mph (209 kph)

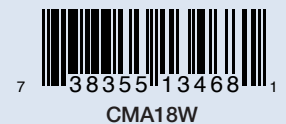
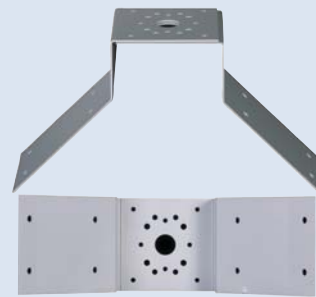


ADI Ordering Information



CMA18W

White Corner-Mount Adapter for MDW1210W Mount



ALSO AVAILABLE:

CMA18B

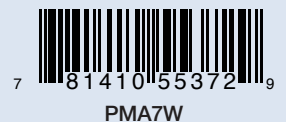
Black Corner-Mount Adapter for MDW1210W Mount



PMA7W

White Pole-Mount Adapter for MDW1210W Mount (or HHMW13 Housing Wall Mount)

See page 23



PRM100B

Parapet Roof-Mount

The PRM100 Parapet Mount is extremely rugged and can withstand some of the harshest environments. The PRM100 simplifies installation and maintenance is ideal for mounting the HD6 to a roof parapet. The PRM100 includes two base mounting flanges to secure the mount to the parapet. By loosening the set screws, the PRM100 can pivot inward/outward from the parapet for simplified installation and dome access. The PRM100 also includes a sealed conduit fitting for all cable connections.

- Schedule-40 galvanized steel pipe construction
- Max load: 75 lbs.
- Max wind load: 130 mph (209 kph)



ALSO AVAILABLE:

PRM100W

Parapet Roof-Mount in White Color



RapidDome Gold Series Selection Guide

Indoor

Camera Type	Mount Type	Communication Type	Lower Dome	Model Number
18X Color	Plug & Play	RS485/UTC	Tinted	AD5GCPP18
18X Color	False Ceiling	RS485/UTC	Tinted	AD5GCFC18
18X TDN	Plug & Play	RS485/UTC	Tinted	AD5GCMPP18
18X TDN	False Ceiling	RS485/UTC	Tinted	AD5GCMFC18
22X Color	Plug & Play	RS485/UTC	Tinted	AD5GCPP22
22X Color	False Ceiling	RS485/UTC	Tinted	AD5GCFC22

Outdoor

Camera Type	Mount Type	Communication Type	Lower Dome	Model Number
18X Color	Wall	RS485/UTC	Clear	AD8GC18W
18X Color	Soffit	RS485/UTC	Clear	AD8GC18S
18X Color	Pole/Flat Roof	RS485/UTC	Clear	AD8GC18P
18X Color	NPT	RS485/UTC	Clear	ADGC18NPT
18X Color	Architectural Wall	RS485/UTC	Clear	AD8GC18ARCPW
18X Color	Architectural Pole	RS485/UTC	Clear	AD8GC18ARCPP
18X TDN	Wall	RS485/UTC	Clear	AD8GCM18W
18X TDN	Soffit	RS485/UTC	Clear	AD8GCM18S
18X TDN	Pole/Flat Roof	RS485/UTC	Clear	AD8GCM18P
18X TDN	NPT	RS485/UTC	Clear	AD8GCM18NPT
18X TDN	Architectural Wall	RS485/UTC	Clear	AD8GCM18ARCPW
18X TDN	Architectural Pole	RS485/UTC	Clear	AD8GCM18ARCPP
22X Color	Wall	RS485/UTC	Clear	AD8GC22W
22X Color	Soffit	RS485/UTC	Clear	AD8GC22S
22X Color	Pole/Flat Roof	RS485/UTC	Clear	AD8GC22P
22X Color	NPT	RS485/UTC	Clear	AD8GC22NPT
22X Color	Architectural Wall	RS485/UTC	Clear	AD8GC22ARCPW
22X Color	Architectural Pole	RS485/UTC	Clear	AD8GC22ARCPP

RapidDome Gold Indoor Series

The RapidDome Gold Series is a compact, low profile, aesthetically pleasing PTZ dome designed for ease of install that offers plug and play mounting. The indoor series is only 5" in diameter.

- High-resolution (>460 TVL), low-light camera with optional true day/night feature
- 144X zoom (18X optical, 8X digital) or 176X zoom (22X optical, 8X digital)
- Continuous auto focus and Auto Iris with manual overrides
- Intelligent zoom
- 128 presets, 4 preset tours, and 4 mimic tours
- Auto digital backlight compensation
- 28 privacy zones
- Home position
- 8 alarm inputs and 2 relay outputs
- Built-in intelligent receiver for up-the-coax (UTC) or RS485 Twisted Pair (TP) operation
- Built-in code translator provides compatibility with some 3rd party protocols

Refer to RapidDome Gold Series Selection Guide for ordering information on page 54.



False Ceiling



Plug & Play

RAPIDDOME GOLD INDOOR SERIES ACCESSORIES

AD5PB80N

3" (80 mm) Plug & Play Extension



ADI Ordering Information



AD5PB80N

AD5PB300N

12" (300 mm) Plug & Play Extension



AD5PB300N

ADI Ordering Information



AD5PB600N
24" (600 mm) Plug & Play Extension



AD5WBG
Plug & Play Wall Bracket



AD5PBNPT
Plug & Play 1-1/2 Inch NPT Adapter



AD5HHC
Plug & Play Hard Ceiling Housing



RapidDome Gold Outdoor Series

RapidDome Gold Outdoor Series offers the same great features as the indoor series in IP65/NEMA-4 enclosures for high reliability when facing adverse weather conditions. The outdoor series is only 8" in diameter.

- IP65/NEMA-4 rated enclosures
- High resolution low-light camera with optional True Day/Night feature
- 144X zoom (18X optical, 8X digital) or 176X zoom (22X optical, 8X digital)
- Continuous auto focus and Auto Iris with manual overrides
- Intelligent zoom
- 128 presets, 4 preset tours, and 4 mimic tours
- 28 privacy zones
- Home position
- 8 alarm inputs and 2 relay outputs
- Built-in intelligent receiver for up-the-coax (UTC) or RS485 Twisted Pair (TP) operation
- Built-in code translator provides compatibility with some 3rd party protocols

Refer to RapidDome Gold Series Selection Guide for ordering information on page 54.

HD8EXGCM18W

RapidDome Explosion Proof

The HD8EXGCM18W offers the following features:

- Highest rating for explosion proof environments, rating includes continuously present explosive atmospheres
- Enclosure is 316L stainless steel construction
- Withstands high pressure water washes and salt water environments
- Fully integrated RapidDome Gold in color and black and white (18X) Day/Night operation
- High-speed pan and tilt functions, presets, tours, alarm positioning
- Dome assembly plug-and-play for ease of installation and maintenance
- IP66/67 rating
- NEC505 approval pending



ADI Ordering Information



RAPIDDOME GOLD OUTDOOR SERIES ACCESSORIES

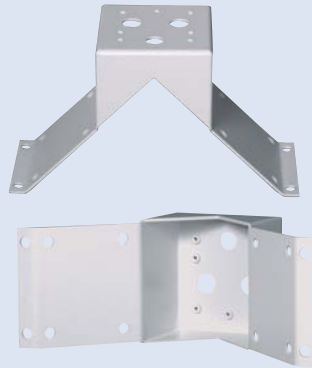
ADI Ordering Information



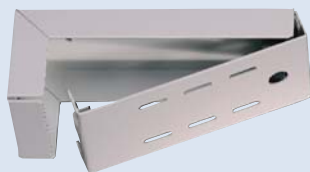
ADPMAT
Side Mount Pole Bracket for Pole/Flat Roof Mount



ADPMAW
Side Mount Pole Bracket for Wall Mount



H8E-CB
Corner Mount Bracket for Wall Mounts



AD8RMAW
Over-the-Roof Wall Mount Adapter